

The image features a light gray architectural rendering of a building complex. The top portion shows a close-up of a building with a corrugated metal roof and several chimneys. The bottom portion shows a wider view of a residential-style building with multiple windows and a flat roof. The background is a solid light gray.

**PARCO INNOVAZIONE «REGGIANE»
CAPANNONE 17 – EDIFICIO «CATTEDRALE»
PROGETTO DI FATTIBILITA' TECNICO-ECONOMICA**





Committente:

STU Reggiane s.p.a.

piazza Camillo Prampolini 1
42121 Reggio Emilia (RE)
www.parcoinnovazione.it
stureggiane@municipio.re.it
stureggiane@legalmail.it

Responsabile Unico del
Procedimento:

Direttore Area Competitività e
Innovazione sociale del Comune
di Reggio Emilia
arch.Massimo Magnani

Incaricato della integrazione delle prestazioni specialistiche e
Coordinamento Sicurezza in fase di Progettazione:

Arch. Aniello Tafuro [Cairepro]

Progettazione e Coordinamento Architettonico:

Arch. Andrea Zamboni [Zamboni Associati Architettura]

Progettazione Architettonica:

Arch. Giulio Zanni [Cairepro]

Progettazione Strutture:

Ing. Alberto Calza [Cairepro]

Progettazione Impianti Idro Termo Sanitari e Meccanici e

Diagnosi Energetica:

Ing. Letizia Gilardi [Cairepro]

Progettazione Impianti Elettrici e

Progettazione Antincendio:

Ing. Ardilio Magotti [Cairepro]

Progettazione Infrastrutture per la Mobilità:

Ing. Maurizio Zamboni [Zamboni Associati Architettura]

Progettazione Paesaggistica:

Dott. Marco Sassatelli [Studiosilva]

Collaboratori alla Progettazione Architettonica:

Alessandro Molesini [Zamboni Associati Architettura]

Componenti del Raggruppamento Temporaneo di Professionisti:

Mandante:



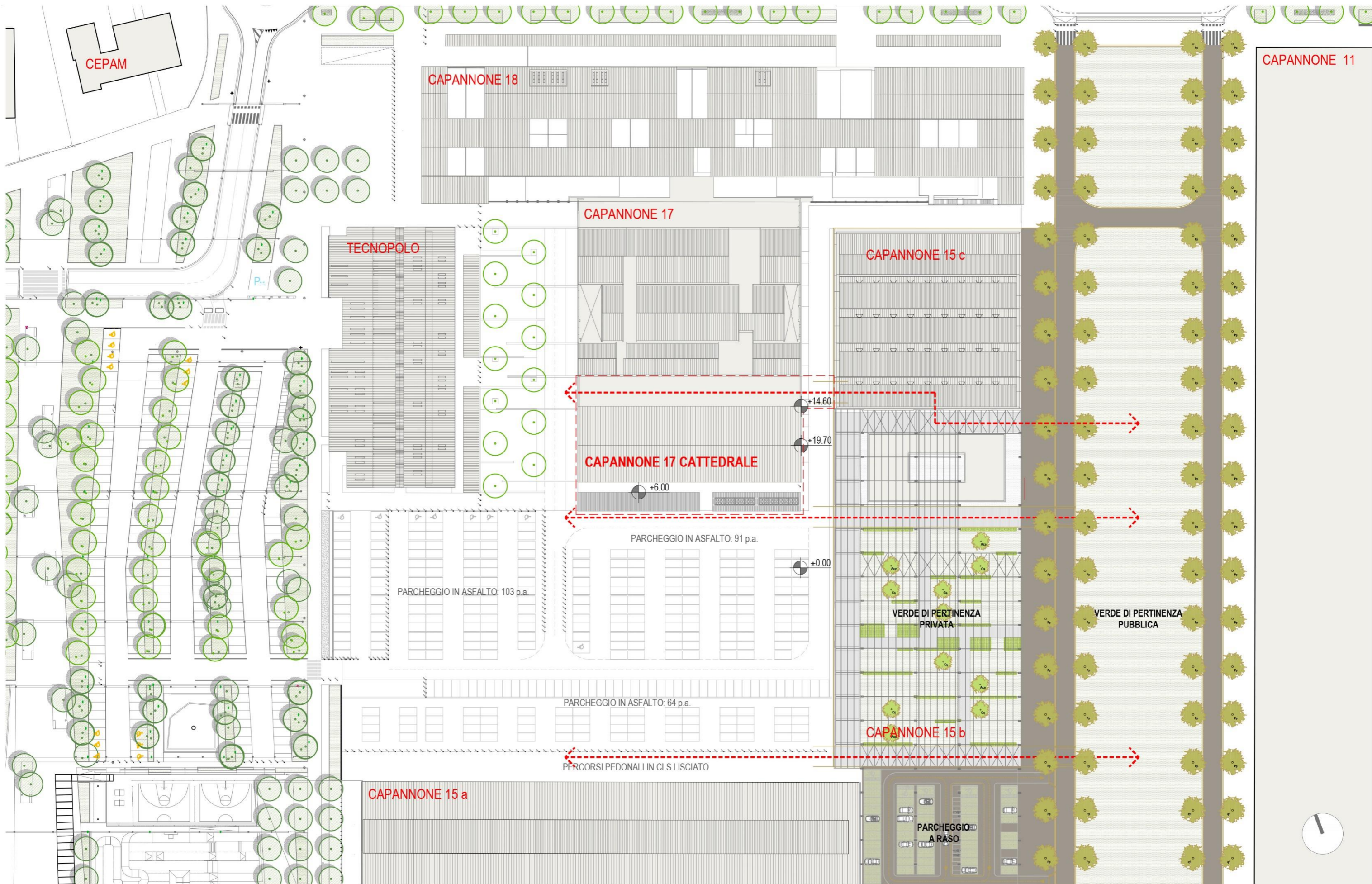
Mandataria:



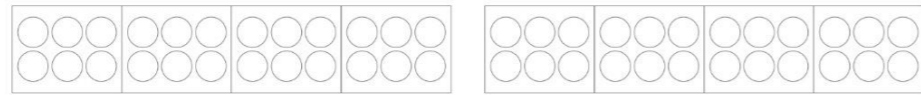
Via Secchi 20 - 42121 Reggio Emilia
T. +39 0522 432322 - F. +39 0522 402070
Partita IVA e C.F.: 02469180356
info@zamboniassociati.it - www.zamboniassociati.it

Mandataria:





IMPIANTI



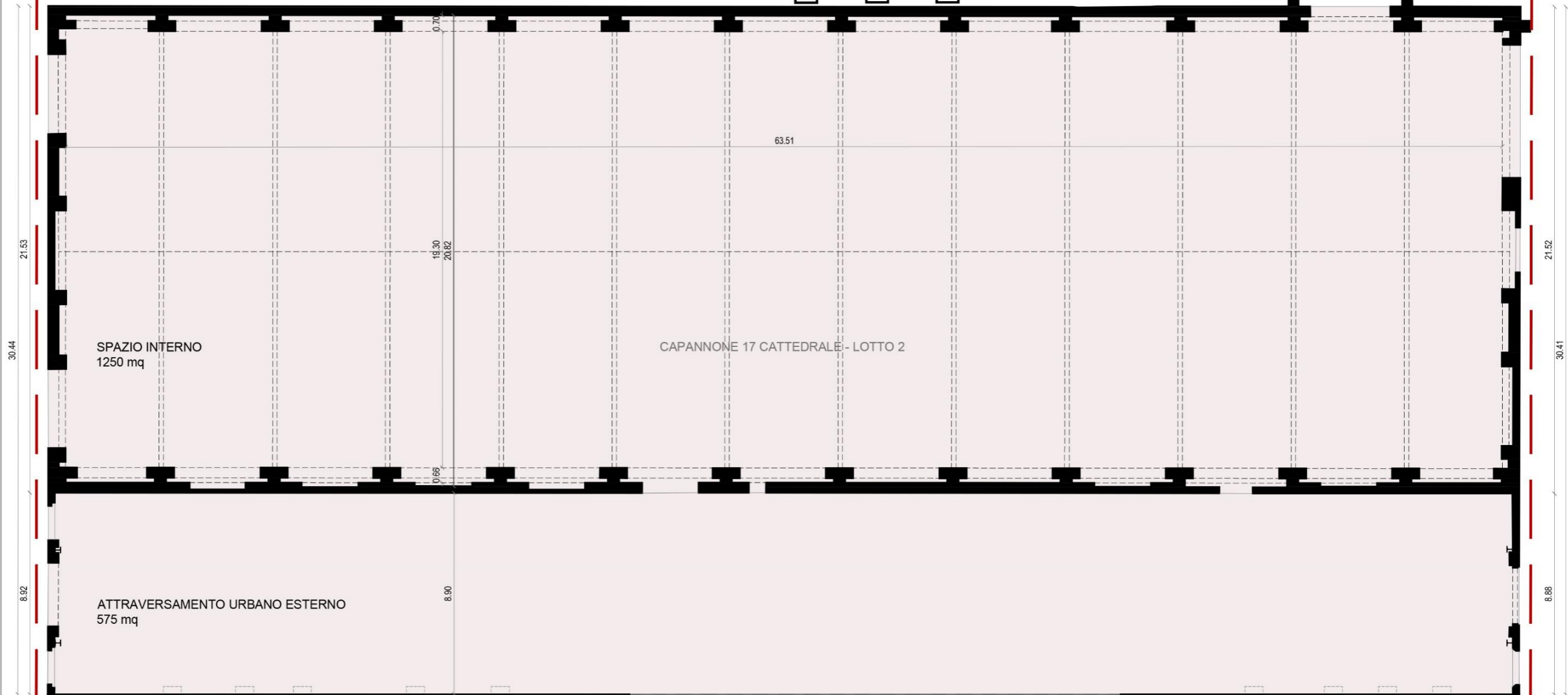
IMPIANTI



-0.05

±0.00

65.09



SPAZIO INTERNO
1250 mq

CAPANNONE 17 CATTEDRALE - LOTTO 2

ATTRAVERSAMENTO URBANO ESTERNO
575 mq

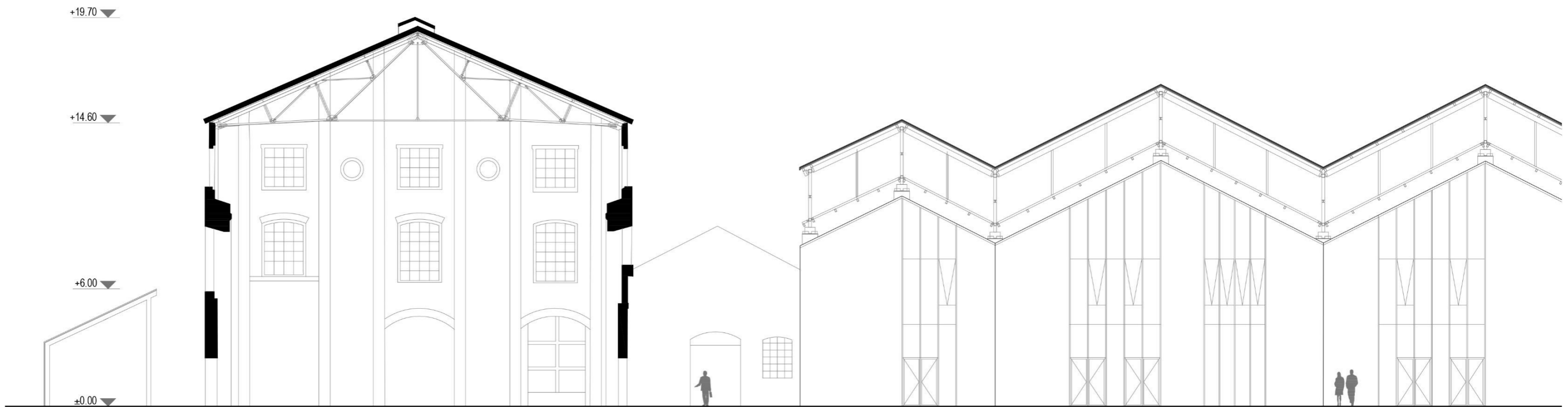
PIAZZA COPERTA
CAPANNONE 17 - LOTTO 1



PROSPETTO EST

CAPANNONE 17 CATTEDRALE - LOTTO 2

CAPANNONE 17 - LOTTO 1



SEZIONE A

CAPANNONE 17 CATTEDRALE - LOTTO 2

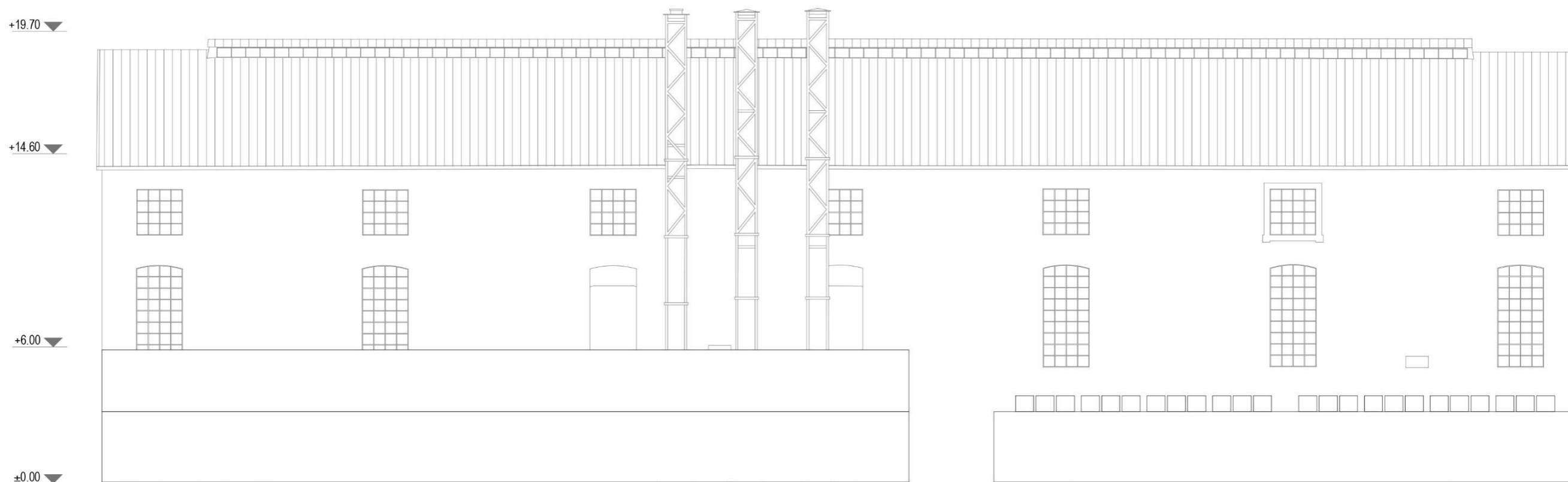
CAPANNONE 17 - LOTTO 1



PROSPETTO OVEST

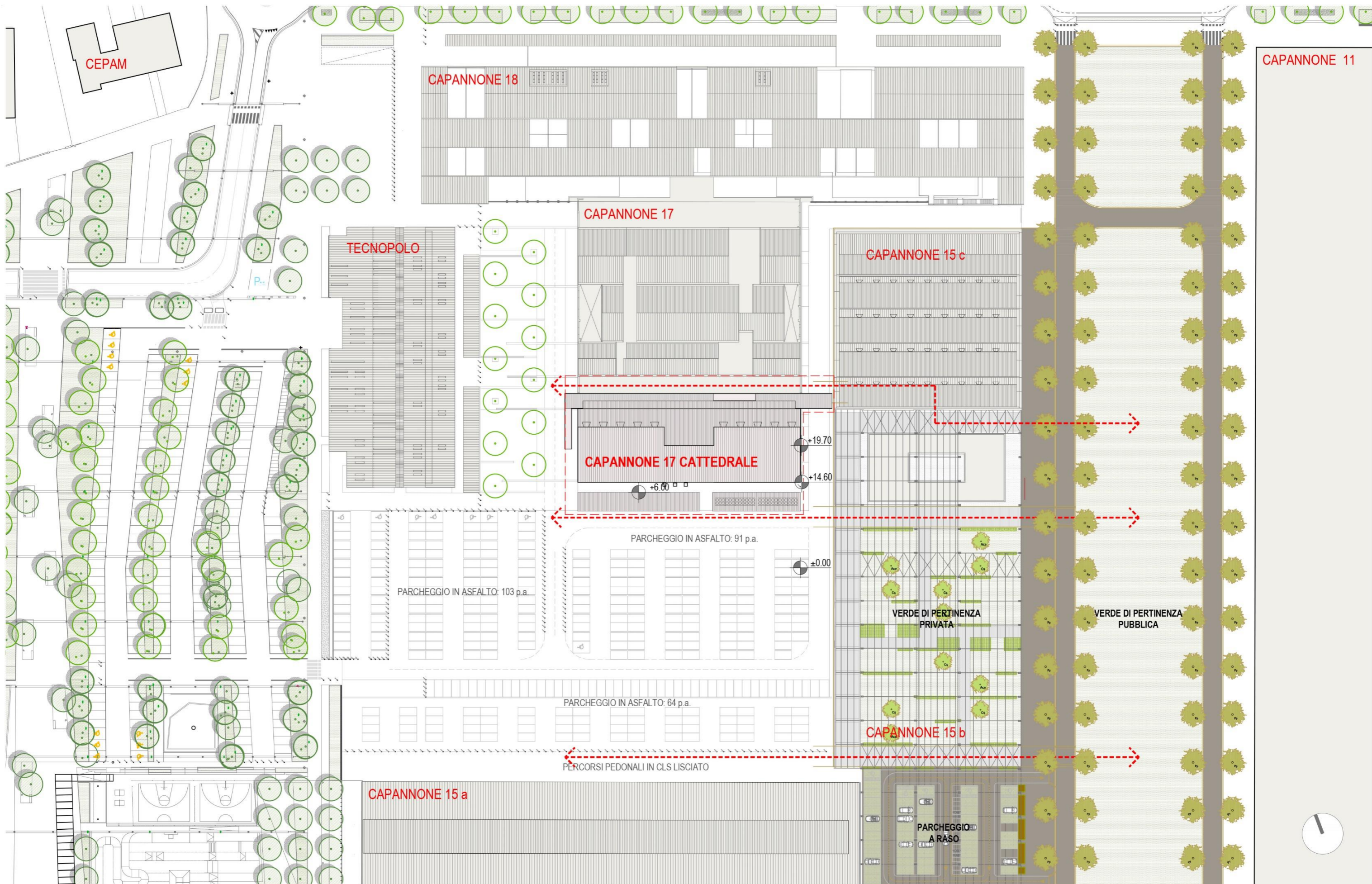
CAPANNONE 17 - LOTTO 1

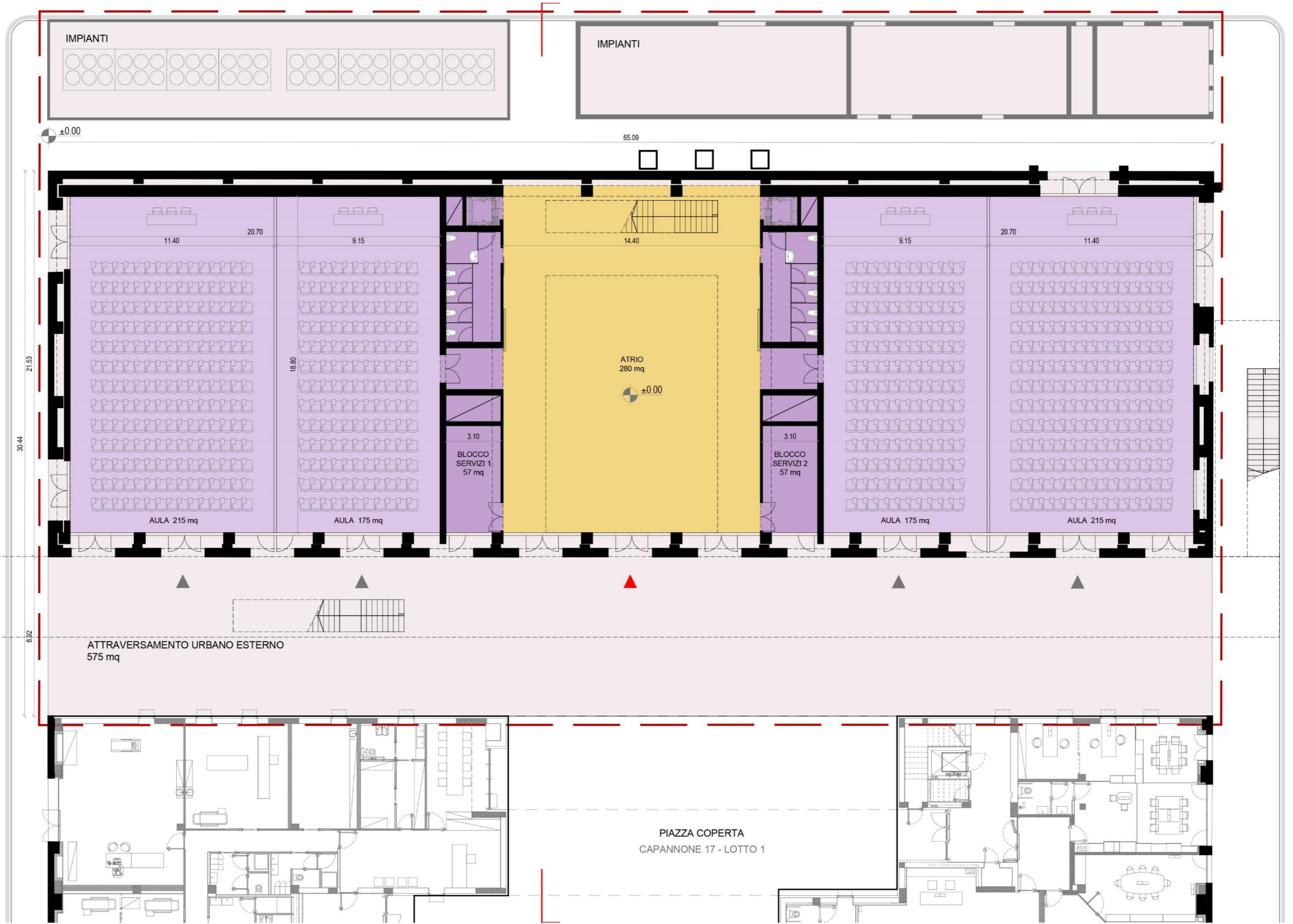
CAPANNONE 17 CATTEDRALE - LOTTO 2

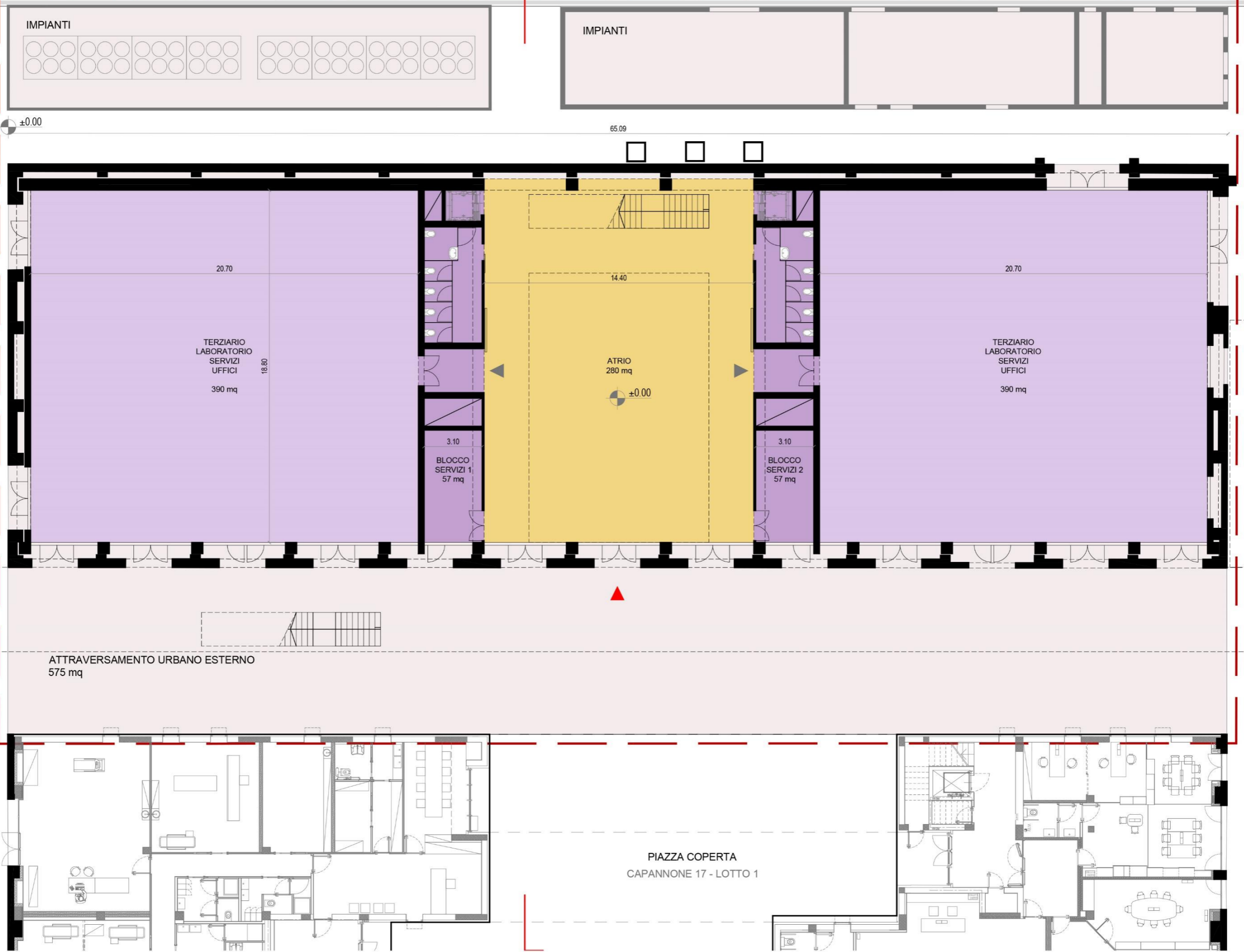


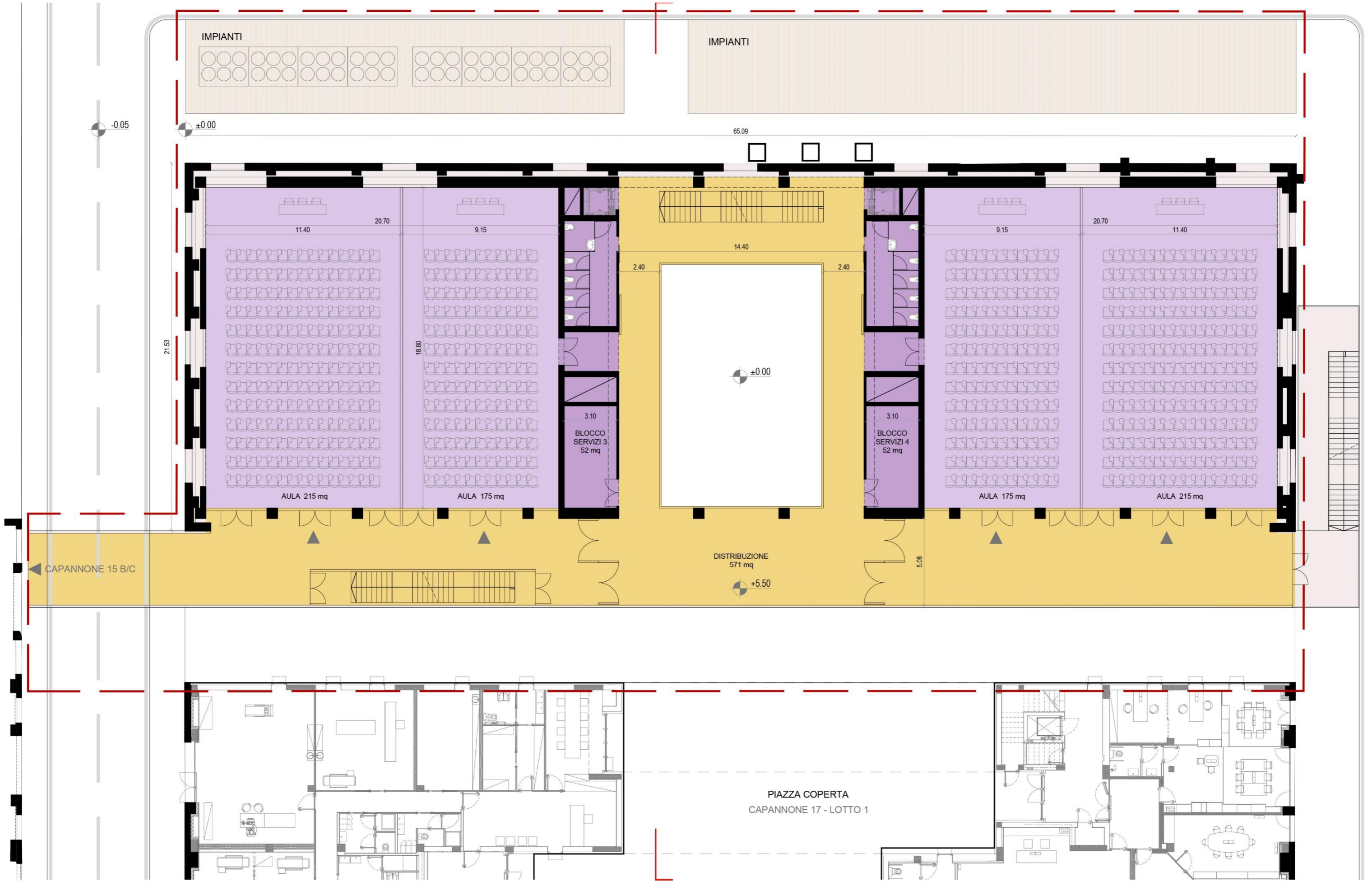
PROSPETTO SUD

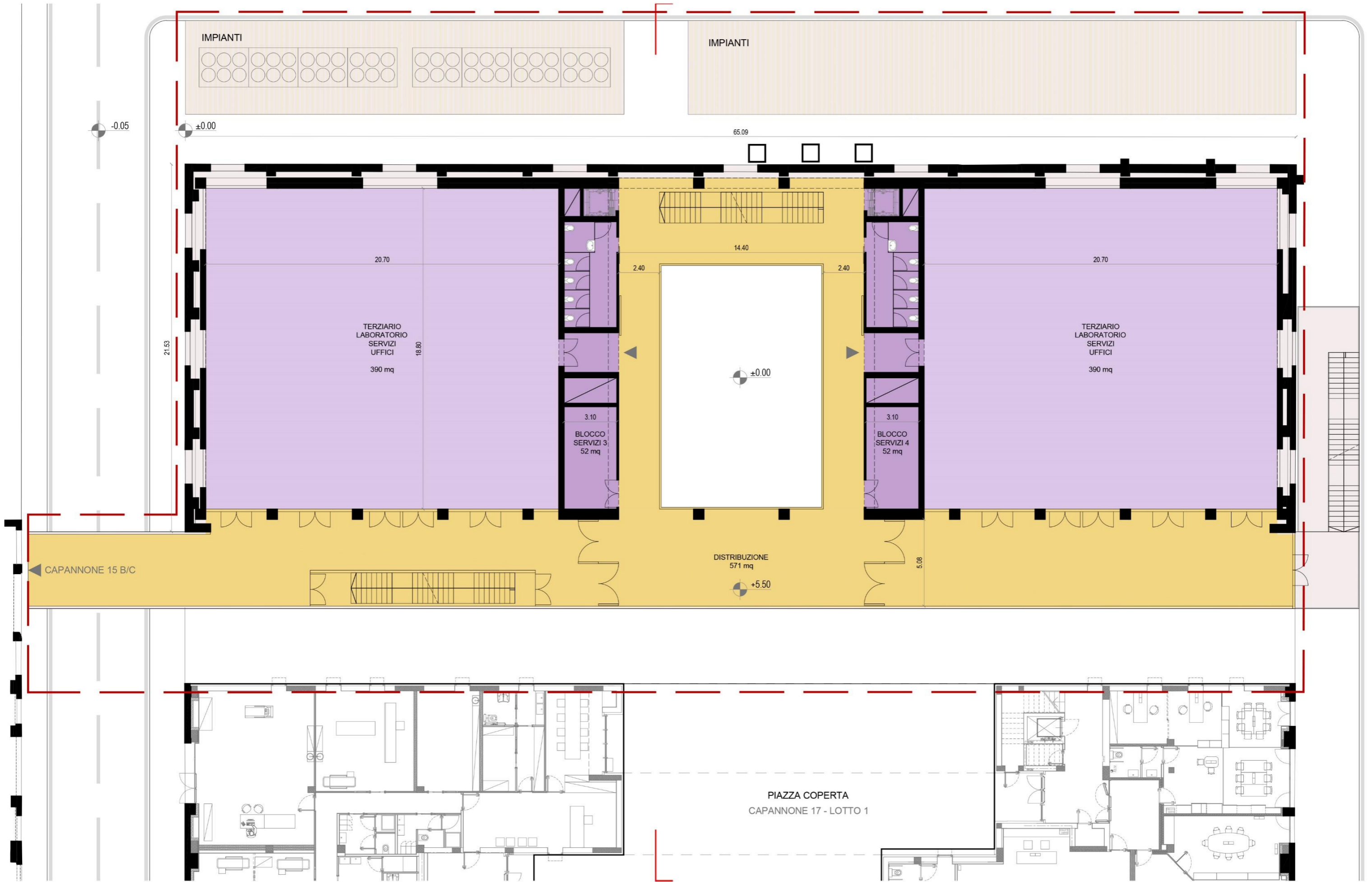
CAPANNONE 17 CATTEDRALE - LOTTO 2

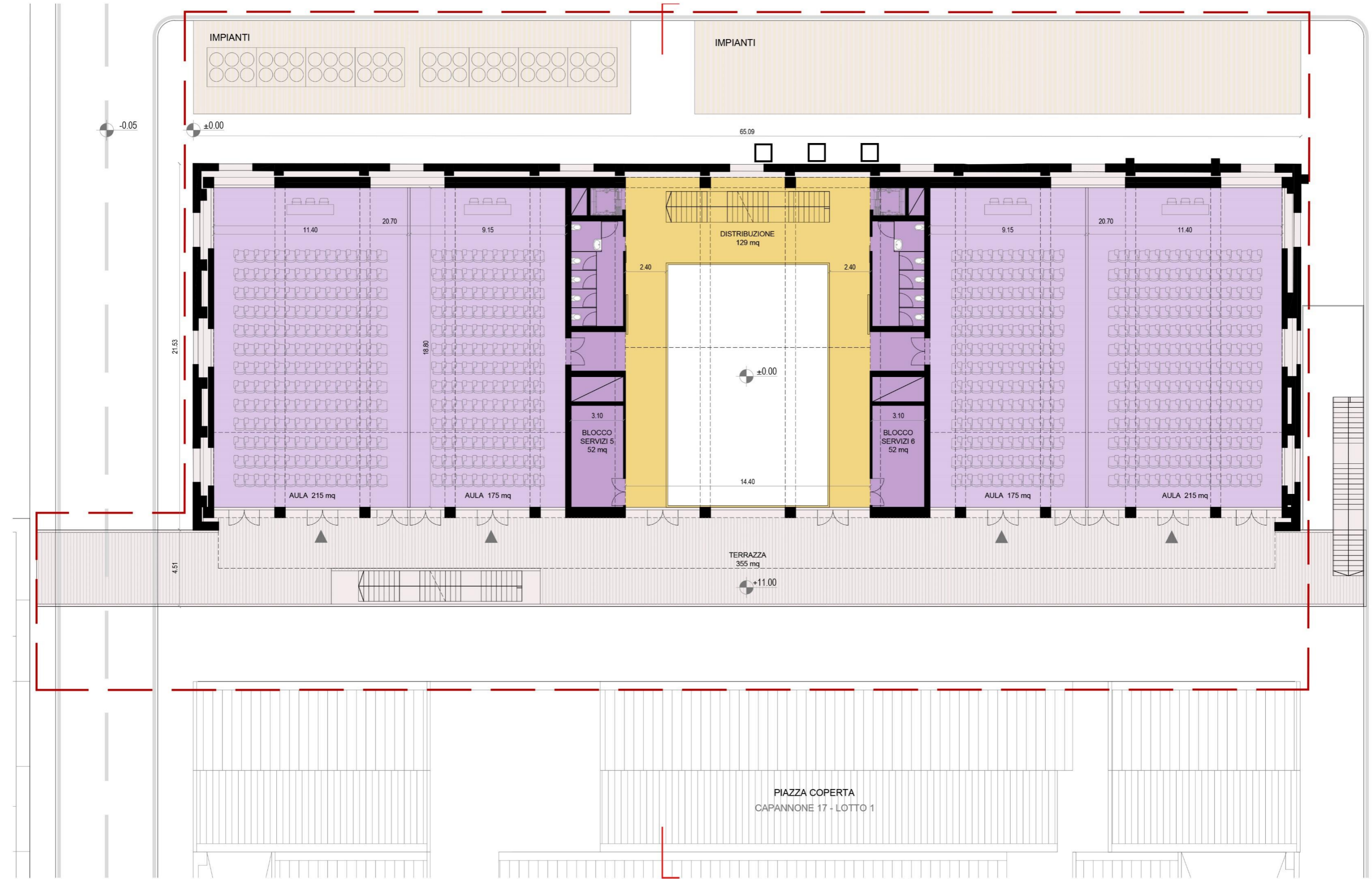


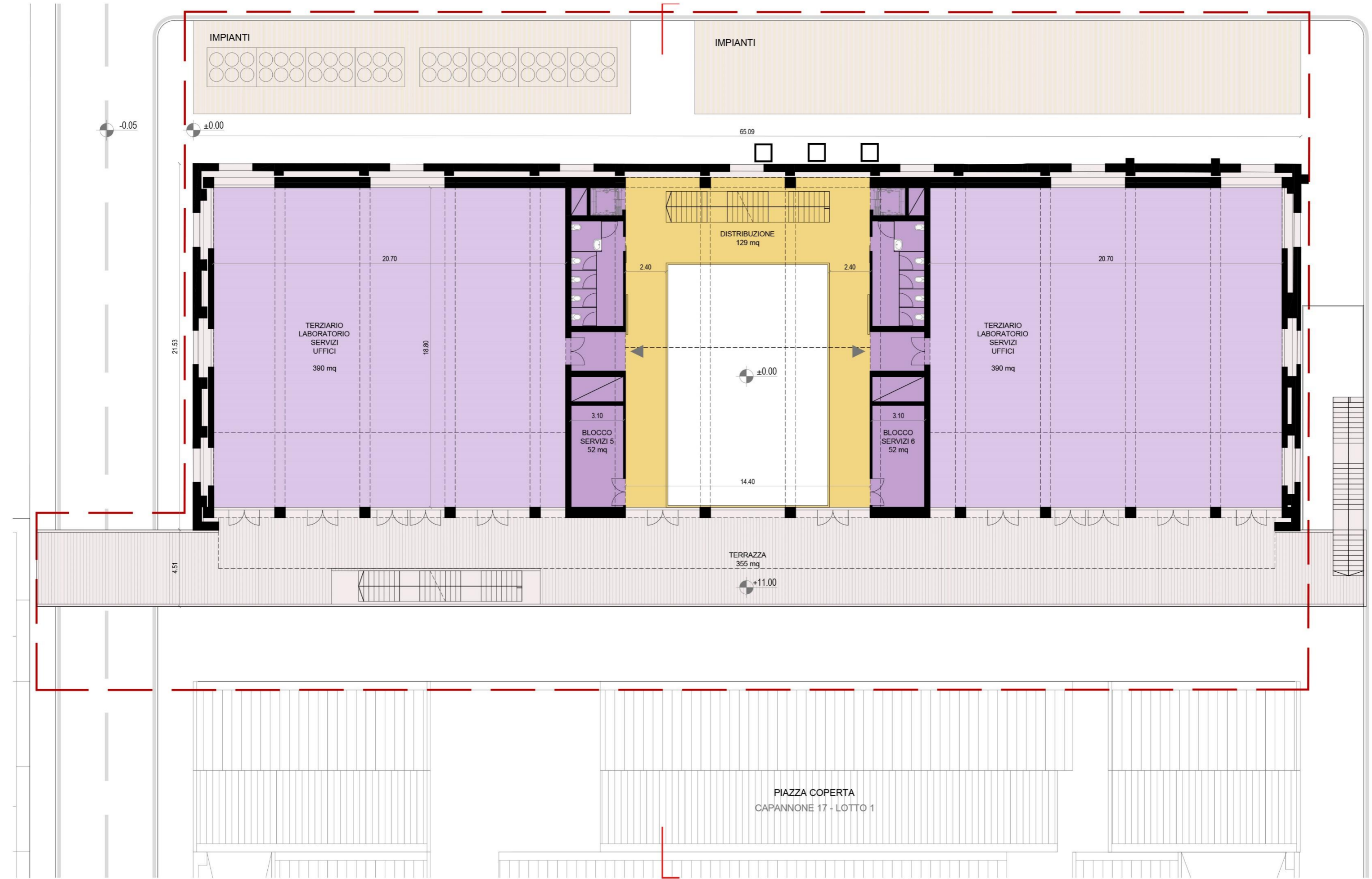


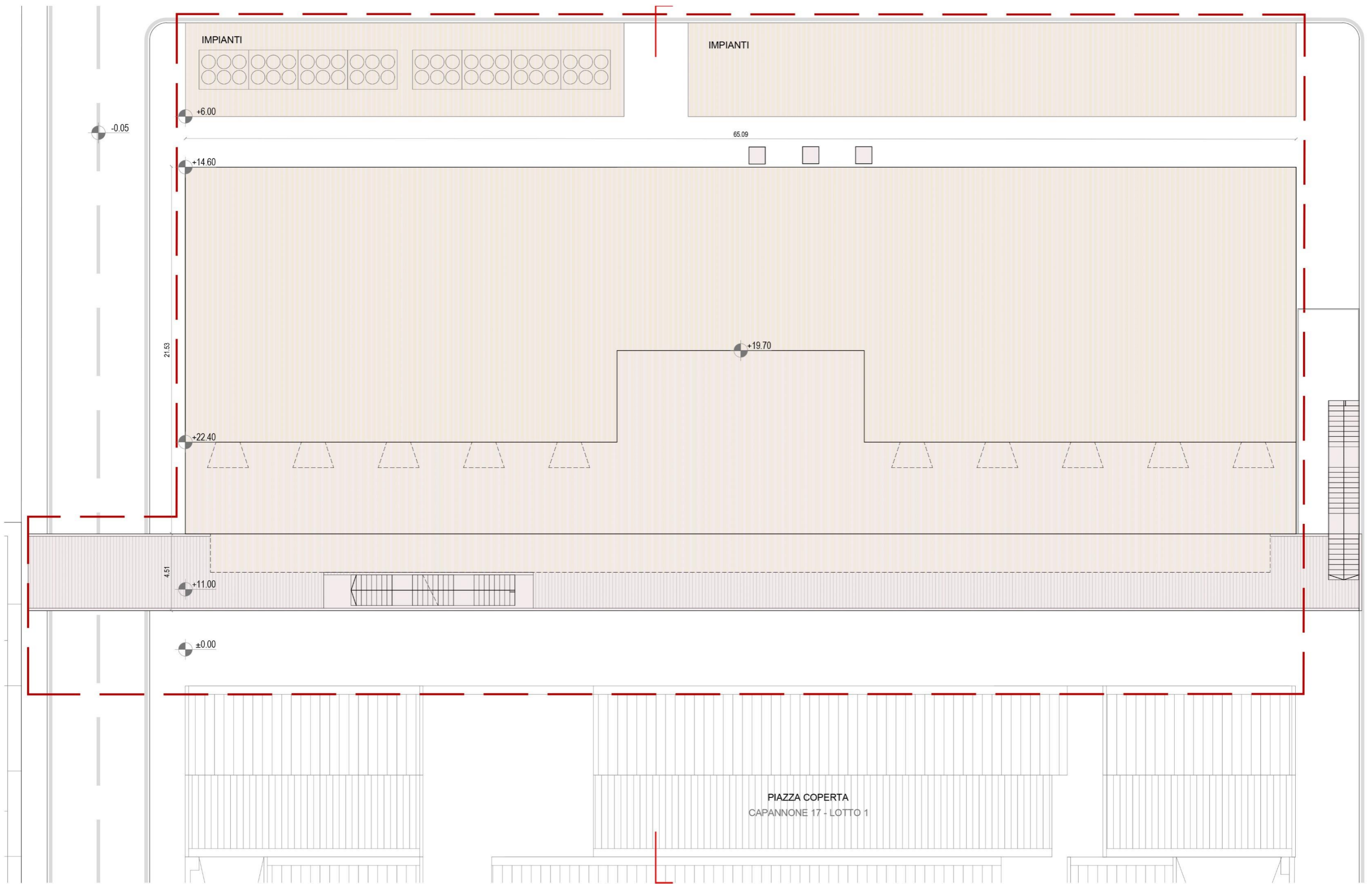










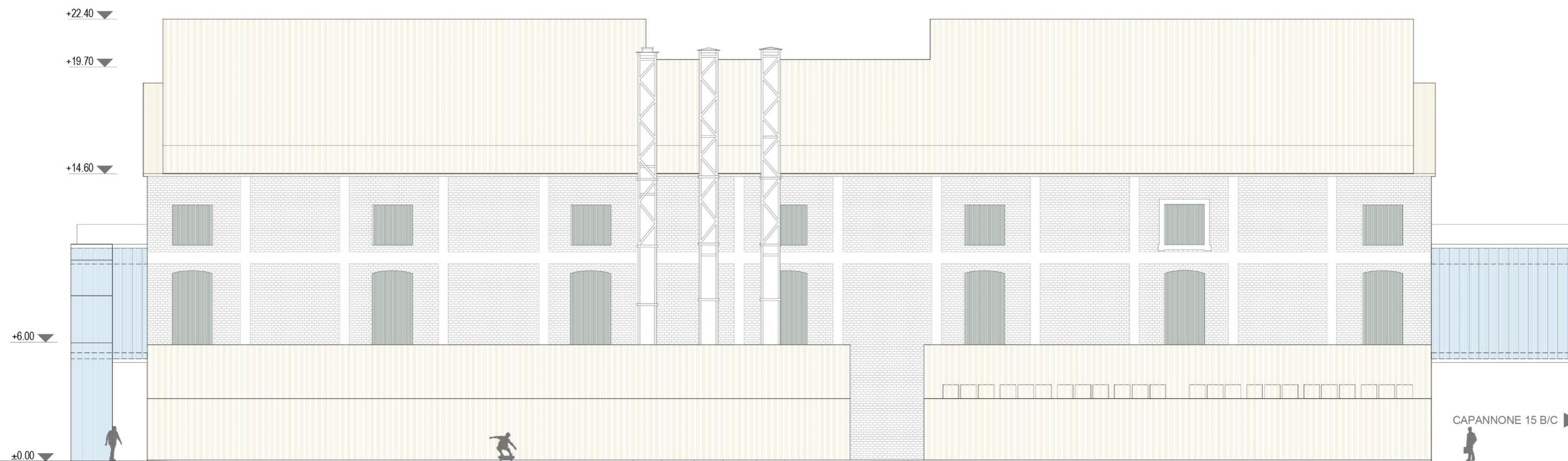




PROSPETTO OVEST

CAPANNONE 17 - LOTTO 1

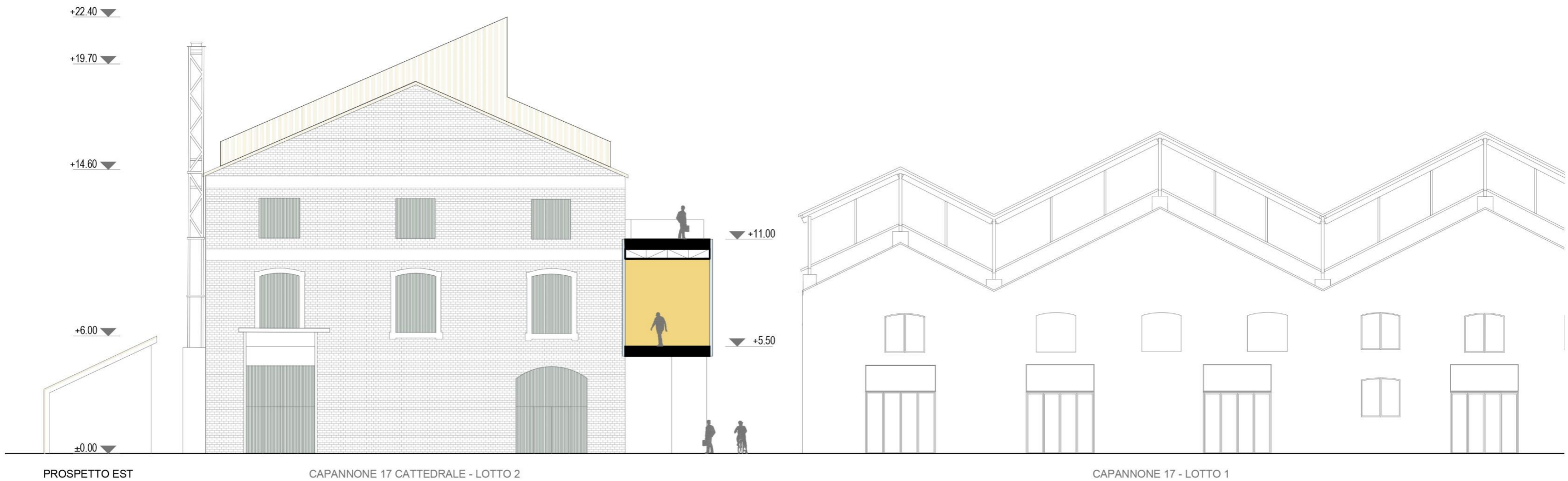
CAPANNONE 17 CATTEDRALE - LOTTO 2



PROSPETTO SUD

CAPANNONE 17 CATTEDRALE - LOTTO 2

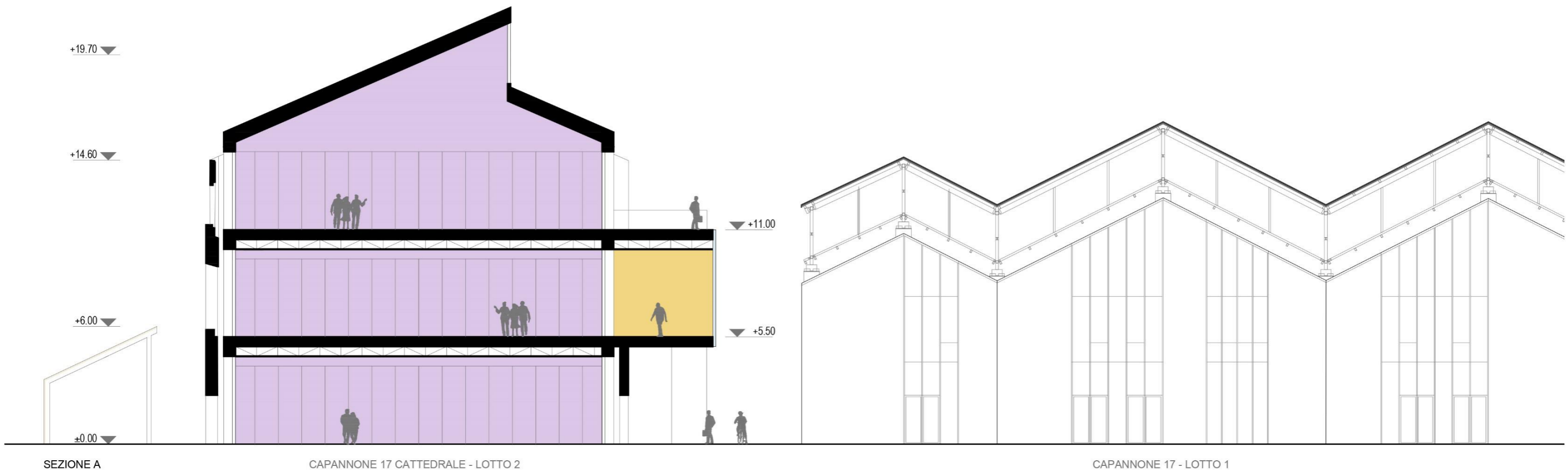
CAPANNONE 15 B/C



PROSPETTO EST

CAPANNONE 17 CATTEDRALE - LOTTO 2

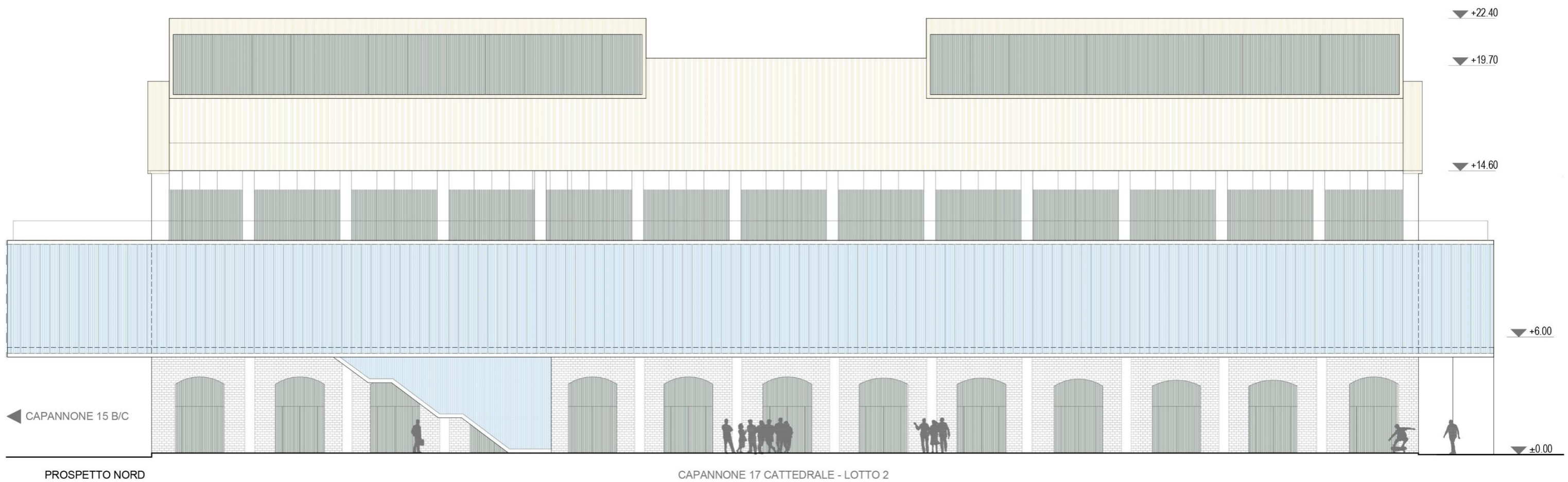
CAPANNONE 17 - LOTTO 1



SEZIONE A

CAPANNONE 17 CATTEDRALE - LOTTO 2

CAPANNONE 17 - LOTTO 1



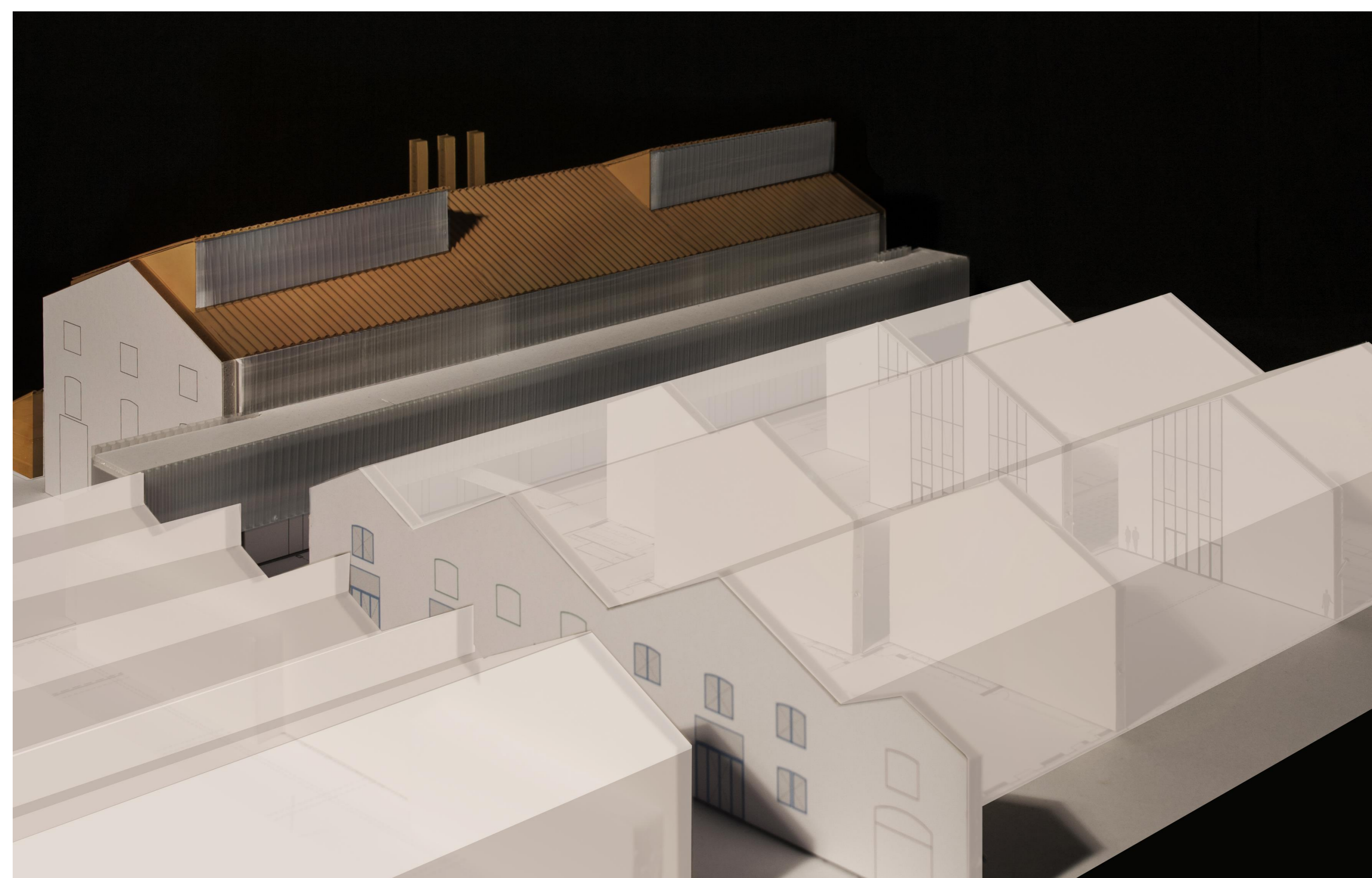


FOTO MODELLO

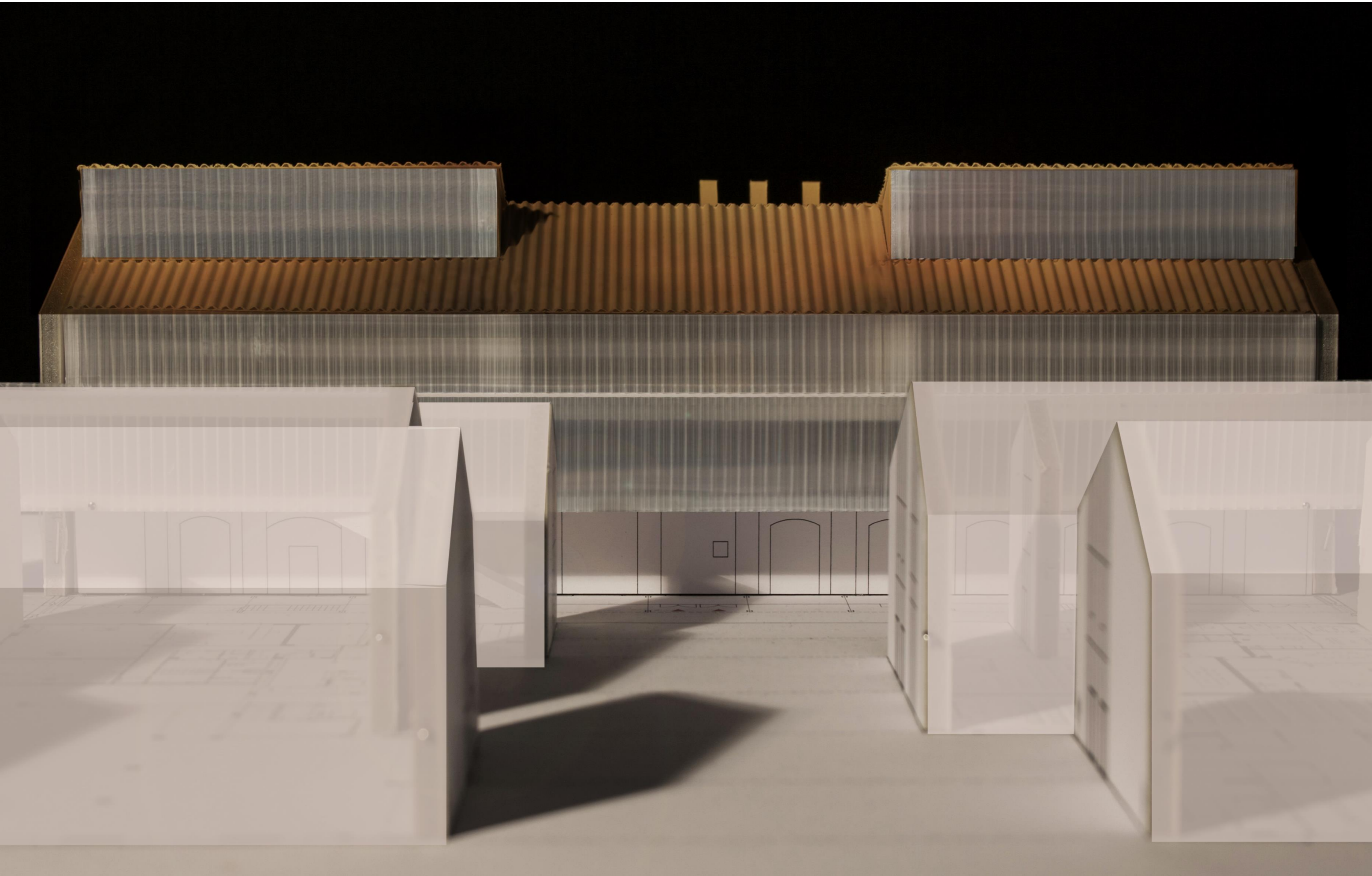


FOTO MODELLO

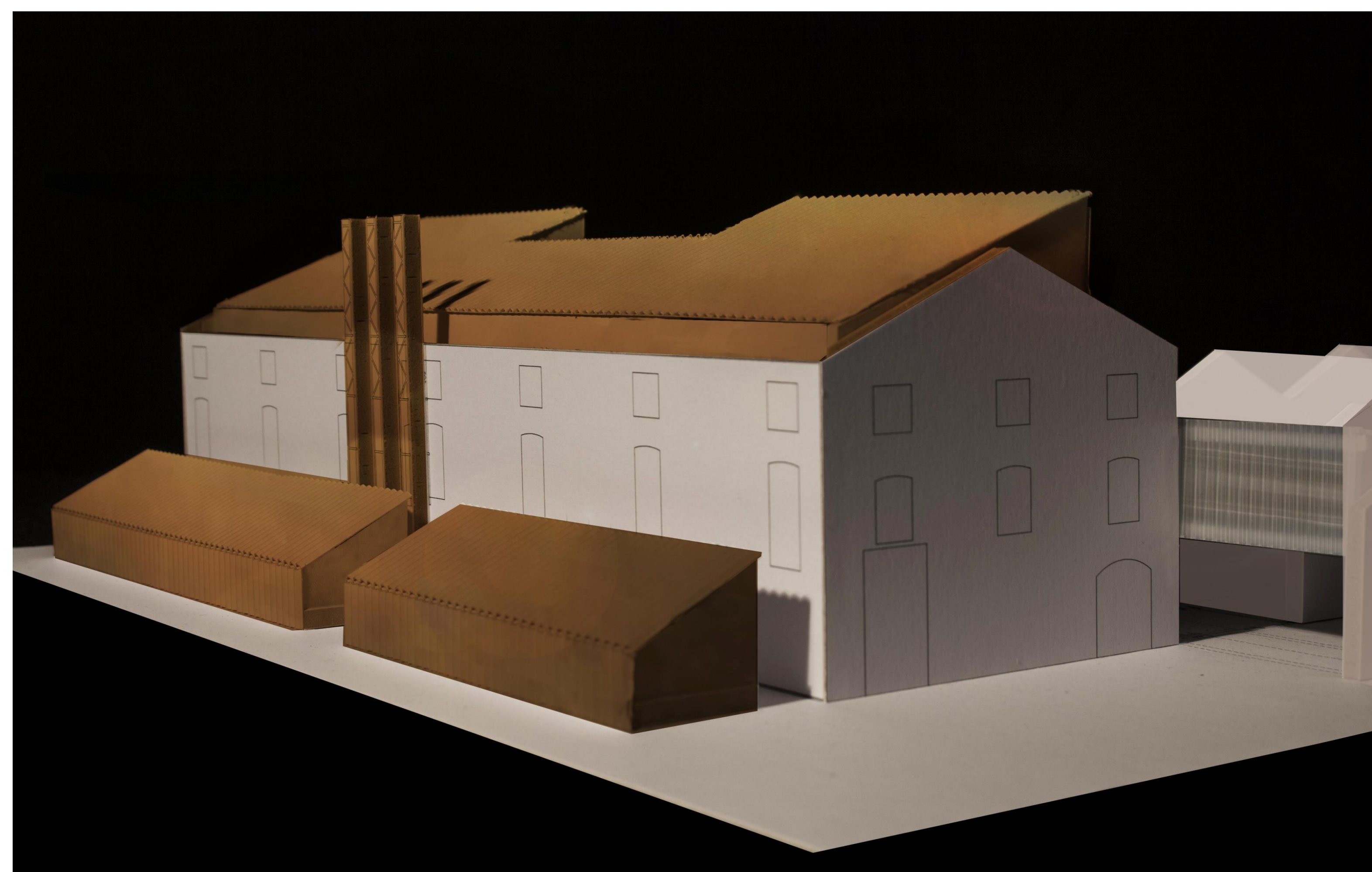
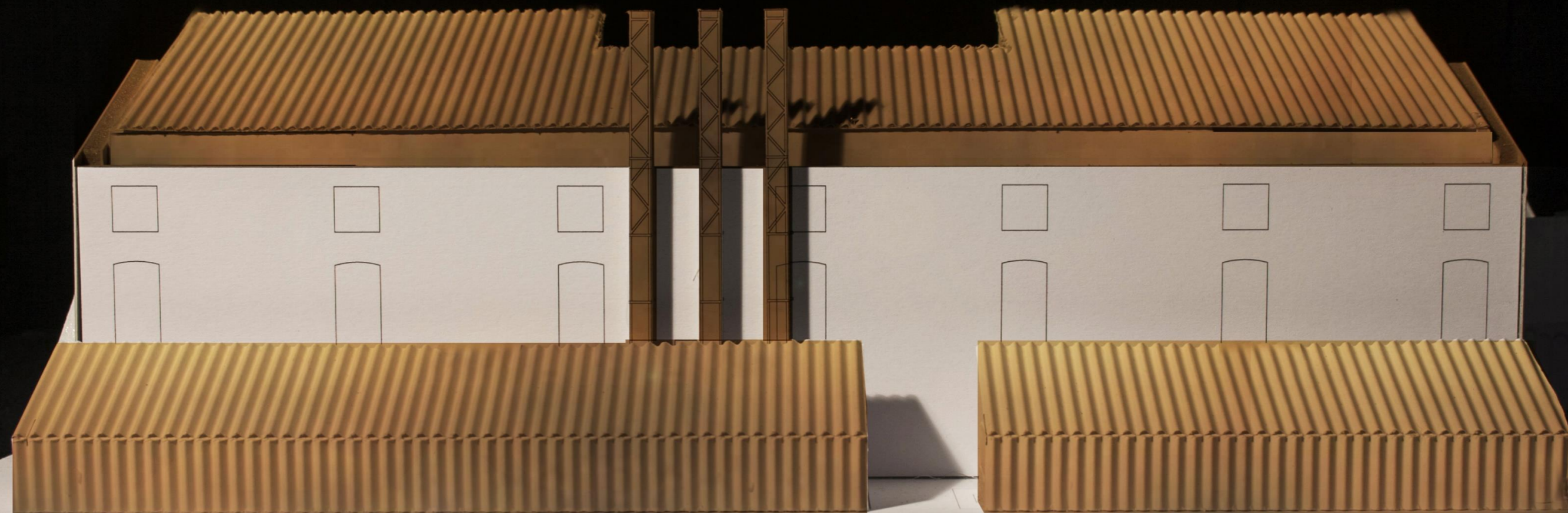


FOTO MODELLO



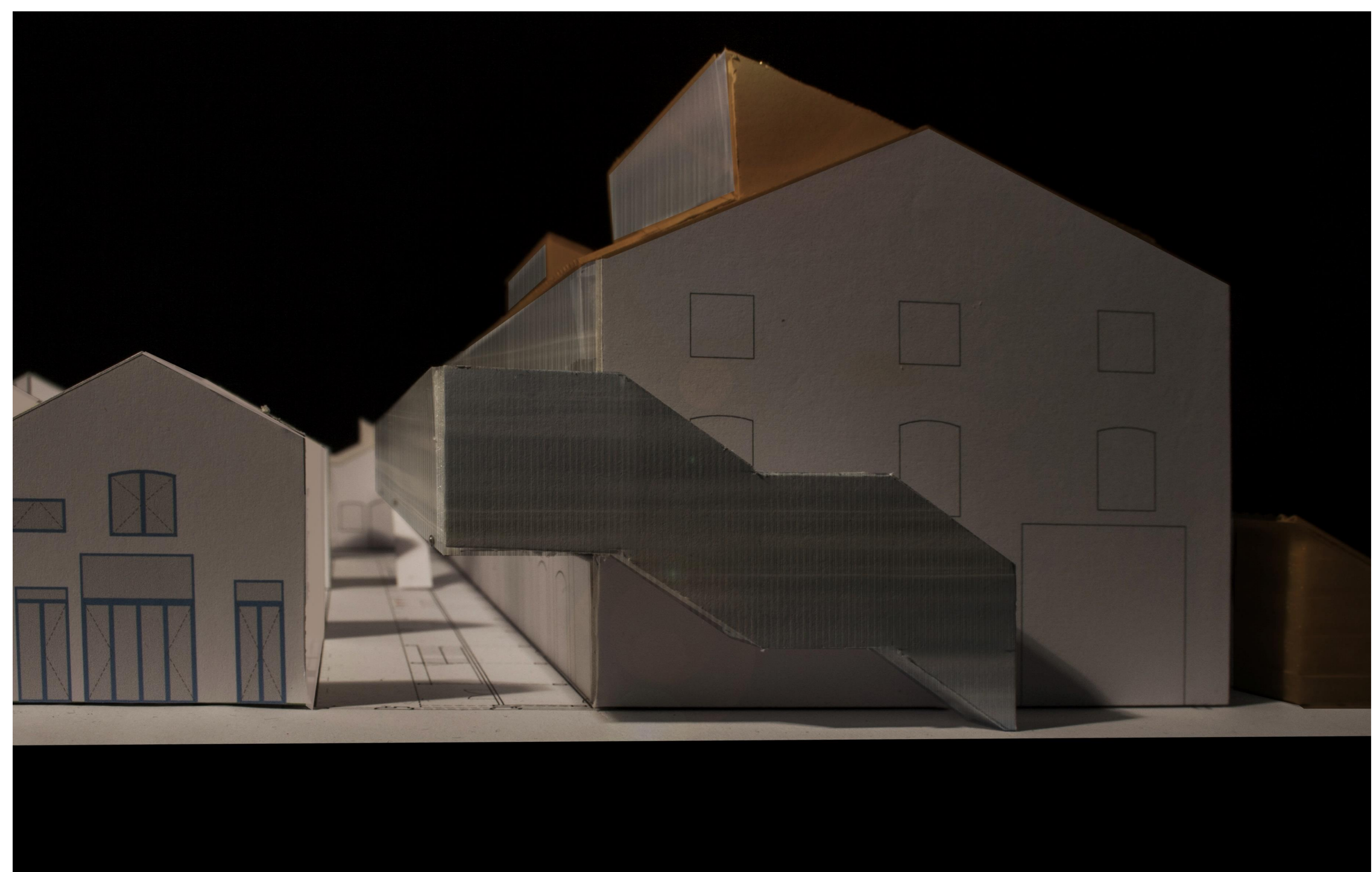


FOTO MODELLO