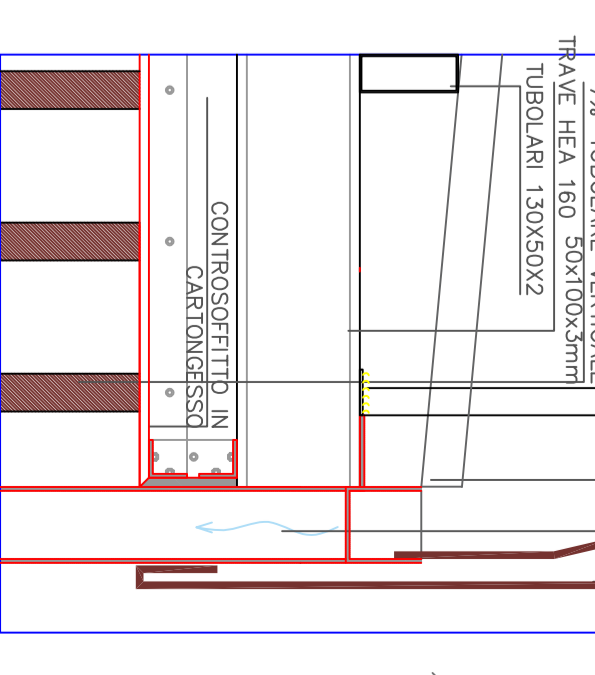
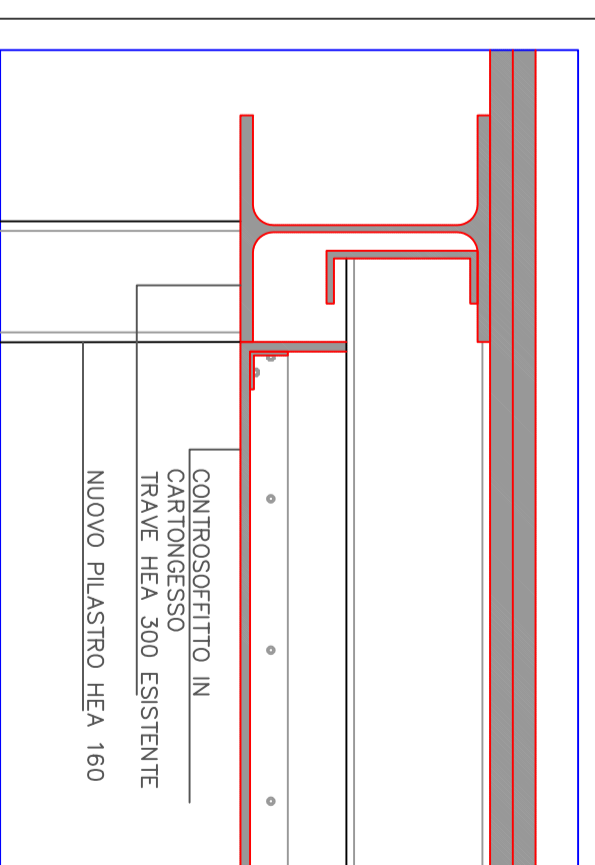
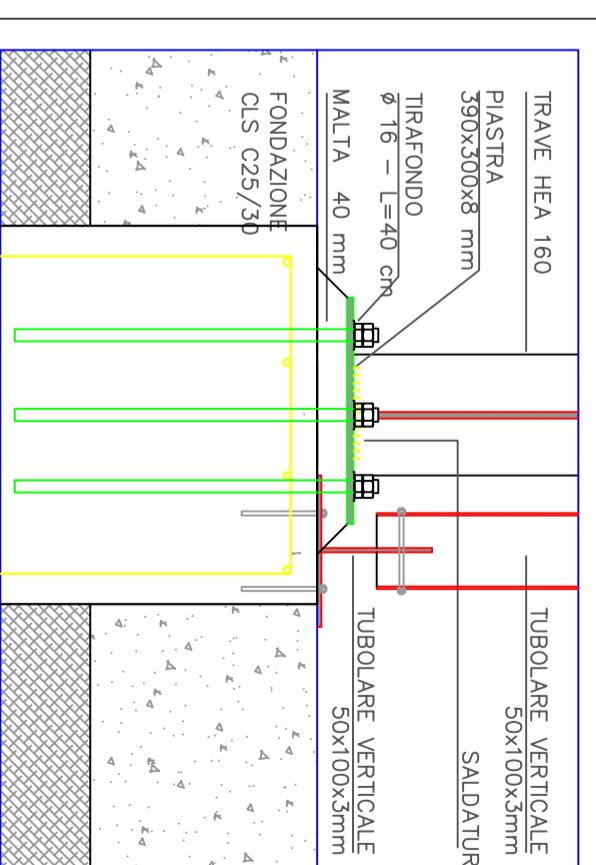
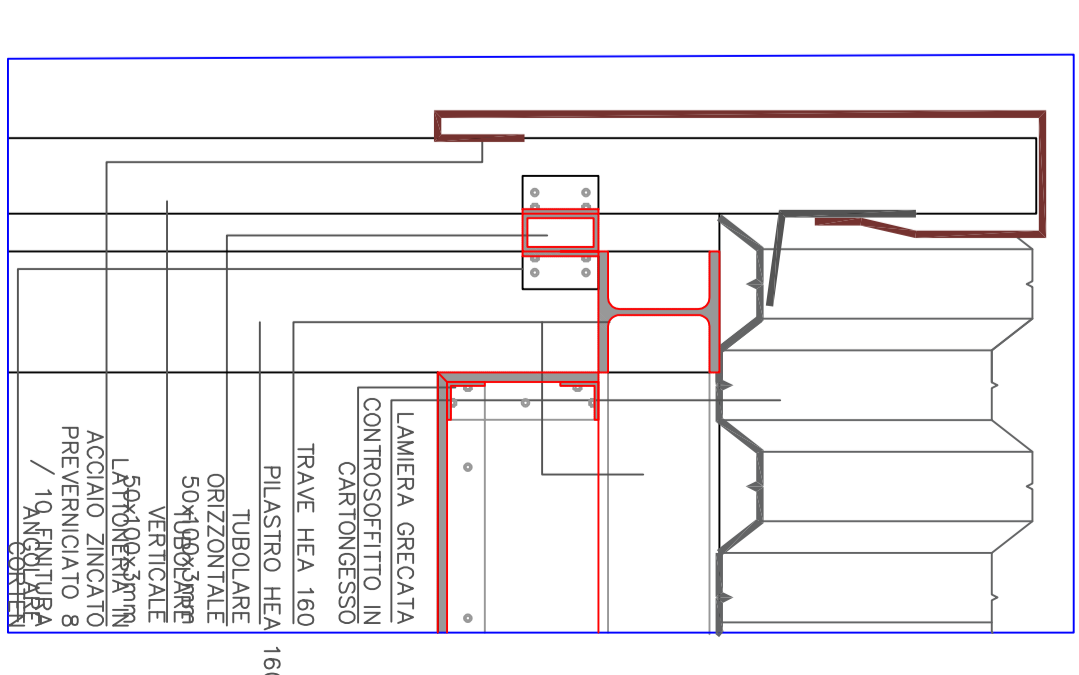
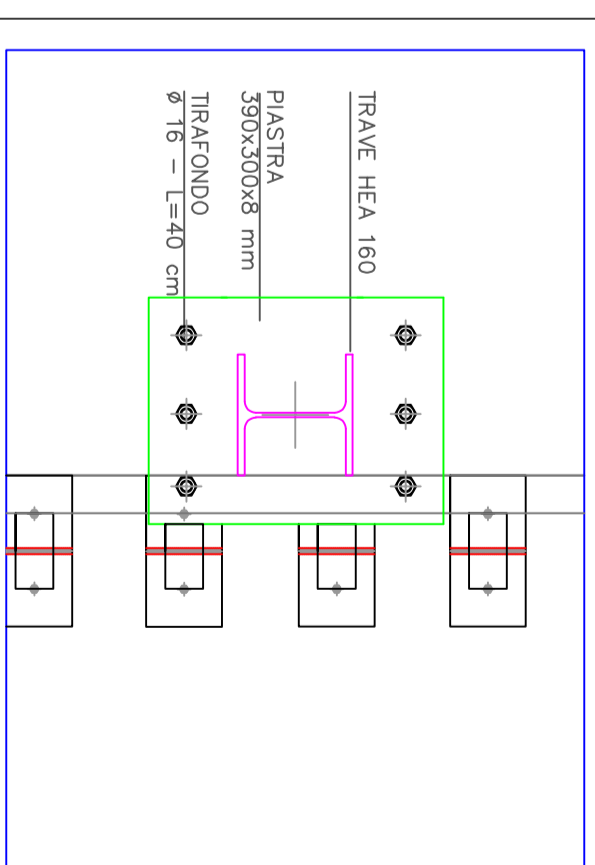
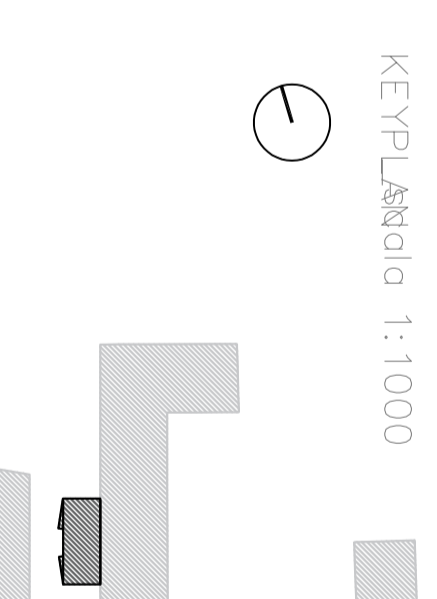
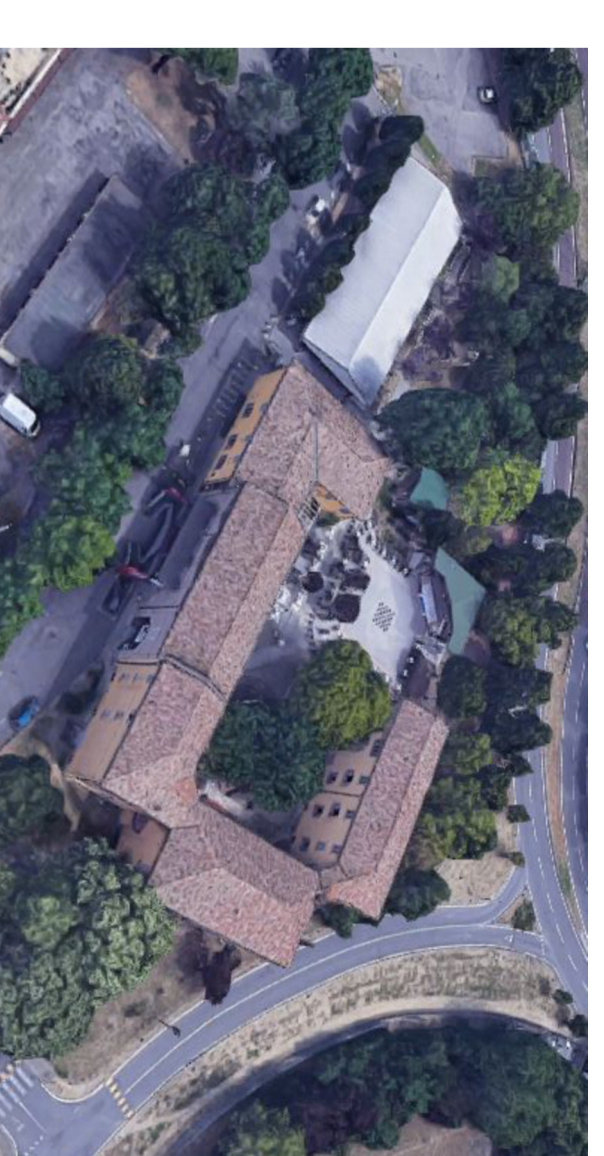


KEYPLAN: 1:1000



COMUNE DI REGGIO EMILIA

SERVIZIO EDIFICI PUBBLICI



PERIZIA DI VARIANTE

PNRR-M5C2-12.1 Quartiere Regina Pats/Orologio - Riqualificazione delle attrezzature collettive di quartiere. Intervento straordinario sul Teatro Piccolo Orologio  
Codice opera: Z. 29901  
CUP: J84E21002030001

VAR.01 STATO VARIATO: STRUTTURA METALLICA SCALA

DIRETTORE DEI LAVORI: ARCH. GIORGIA LOMBARINI  
DIRETTORI OPERATIVI: ARCH. STEFANO PASOLI, ING. GABRIELLA OLIVERO  
RESPONSABILE DEL PROCEDIMENTO: ARCH. GIORGIA LOMBARINI  
DIRIGENTE: ING. SALVATORE FALBO

data prima emissione  
luglio 2025